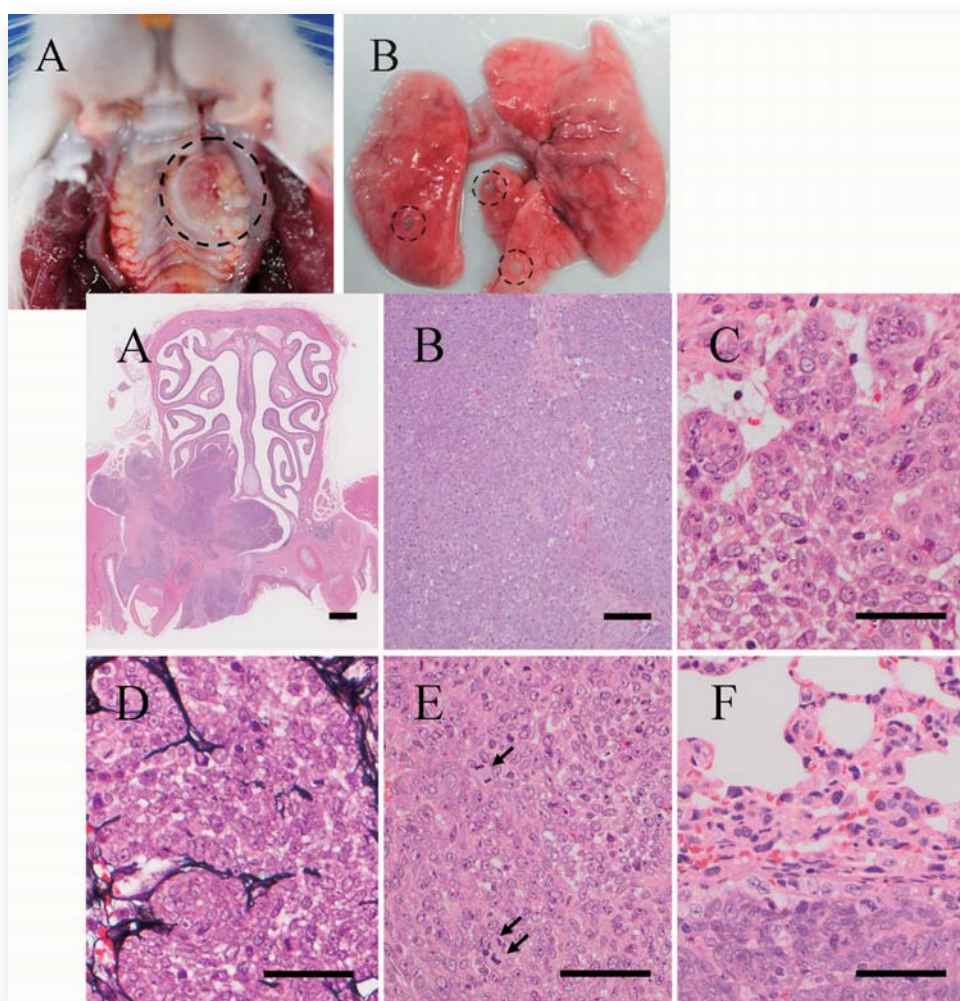




Journal of
**TOXICOLOGIC
PATHOLOGY**

<http://www.japantopath.org/en/publication/jtp/>



*Vol. 30
No. 4
Autumn
2017*

Published by
The Japanese Society of Toxicologic Pathology

The Journal of Toxicologic Pathology has been selected for coverage in Thomson Reuters products and services. Beginning with volume 21, number 1, year 2008, the journal is indexed and abstracted in:

- ◆ Science Citation Index Expanded (also known as SciSearch®)
- ◆ Journal Citation Reports/Science Edition
- ◆ Biological Abstracts
- ◆ BIOSIS Previews

Description

The *Journal of Toxicologic Pathology* is an official periodical journal of the Japanese Society of Toxicologic Pathology. The journal accepts original papers, short communications, case reports and review articles. One volume published each year is composed of four numbers. Members of the Society are entitled to receive all publications in exchange for his or her membership fee. All articles published in the *Journal of Toxicologic Pathology* represent the opinion(s) of the author(s) and should not be construed to reflect the opinion of the Society.

The *Journal of Toxicologic Pathology* has been selected for coverage in Thomson Reuters products and services. Beginning with volume 21, number 1, year 2008, the journal is indexed and abstracted in:

- ◆ Science Citation Index Expanded (also known as SciSearch®)
- ◆ Journal Citation Reports/Science Edition
- ◆ Biological Abstracts
- ◆ BIOSIS Previews

Mailing address: Masami Suzuki, D.V.M., Ph.D., Editor-in-Chief
Editorial Office, *Journal of Toxicologic Pathology*, c/o Publication Center, IPEC, Inc., 1-24-12 Sugamo, Toshima,
Tokyo 170-0002, Japan

Journal of Toxicologic Pathology homepage: <http://www.japantoxpath.org/en/publication/jtp/>

Free access to full papers of

Whole issue: <https://www.jstage.jst.go.jp/browse/tox/>

Vol. 22 (2009) to present: <http://www.ncbi.nlm.nih.gov/pmc/journals/1592/>

Notice for photocopying

If you wish to photocopy any work of this publication, you have to get permission from the following organization to which licensing of copyright clearance is delegated by the copyright owner.

<All users except those in USA> Japan Academic Association for Copyright Clearance, Inc. (JAACC)
6-41 Akasaka 9-chome, Minato-ku, Tokyo 107-0052, Japan
Phone 81-3-3475-5618 FAX 81-3-3475-5619 E-mail: info@jaacc.jp

<Users in USA> Copyright Clearance Center, Inc., 222 Rosewood Drive, Danvers, MA 01923, USA
Phone 1-978-750-8400 FAX 1-978-646-8600

Online ISSN 1881-915X

Cover: Basal cell carcinoma with pulmonary metastasis in a young rat.

Upper: Macroscopic appearance. (A) Maxillary lesion. The surface was ulcerated. (B) White nodules in the lung.

Lower: (A) Maxillary lesion. Tumor cells infiltrated the hard palate and nasopharynx. HE stain. Bar = 1,000 μ m. (B)

Tumor cells in the maxilla. Tumor cells showed the solid and sheet-like growth under a low-power field. Bar = 100 μ m. (C)

Tumor cells in the maxilla. Tumor cells showed a pattern of partial lobular proliferation. HE stain Bar = 50 μ m. (D) Tu-

mor cells in the maxilla were separated by a thin connective tissue stroma. PAM stain. Bar = 50 μ m. (E) Tumor cells in

the maxilla contained basophilic cytoplasm, and the nuclei were round to oval in shape with single or multiple nucleoli.

Many mitotic figures were seen (arrows). HE stain. Bar = 50 μ m. (F) Tumor cells in the lung. The border between nod-

ule and normal lung tissue was clear. The tumor cells in the lung nodules were similar to those in the maxillary lesion (B).

HE stain. Bar = 50 μ m. (See A Urashima, *et al.* p 323–326)