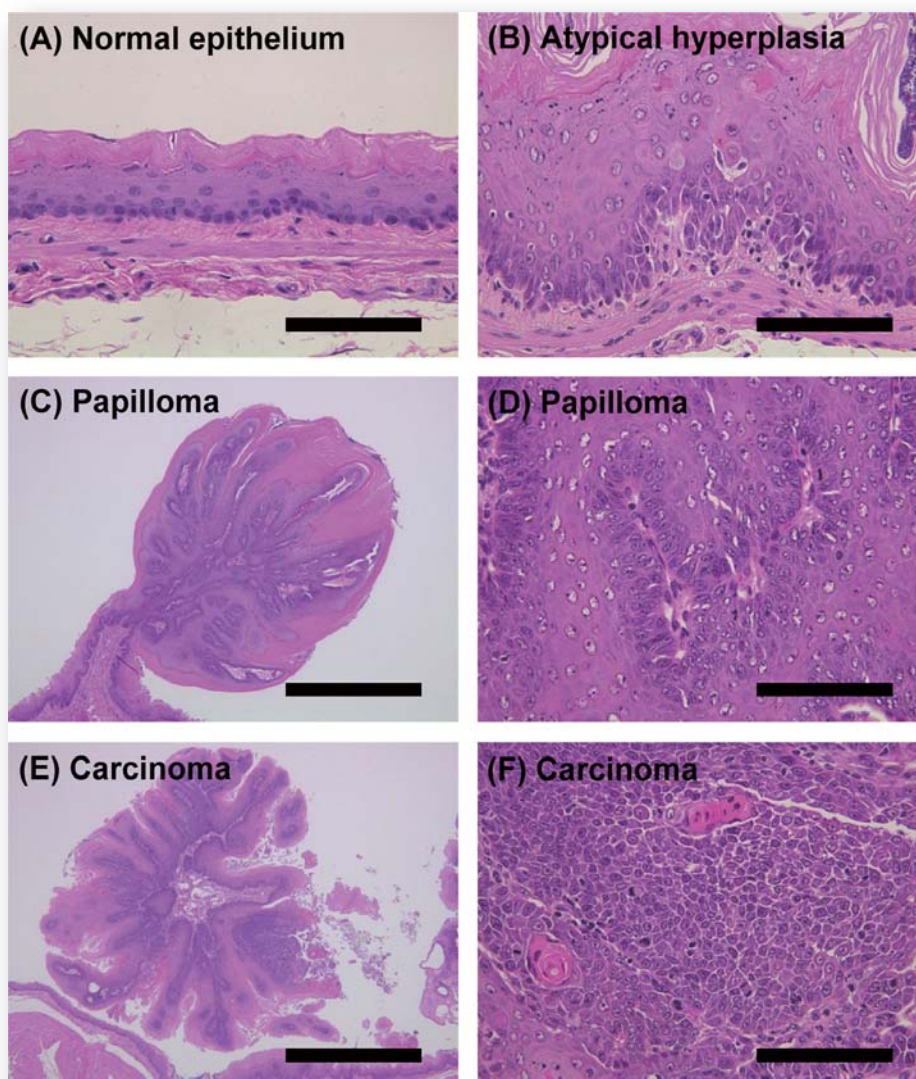




Journal of
**TOXICOLOGIC
PATHOLOGY**

<http://www.japantopath.org/en/publication/jtp/>



*Vol. 29
No. 4
Autumn
2016*

Published by
The Japanese Society of Toxicologic Pathology

The Journal of Toxicologic Pathology has been selected for coverage in Thomson Reuters products and services. Beginning with volume 21, number 1, year 2008, the journal is indexed and abstracted in:

- ◆ Science Citation Index Expanded (also known as SciSearch®)
- ◆ Journal Citation Reports/Science Edition
- ◆ Biological Abstracts
- ◆ BIOSIS Previews

Description

The *Journal of Toxicologic Pathology* is an official periodical journal of the Japanese Society of Toxicologic Pathology. The journal accepts original papers, short communications, case reports and review articles. One volume published each year is composed of four numbers. Members of the Society are entitled to receive all publications in exchange for his or her membership fee. All articles published in the *Journal of Toxicologic Pathology* represent the opinion(s) of the author(s) and should not be construed to reflect the opinion of the Society.

The *Journal of Toxicologic Pathology* has been selected for coverage in Thomson Reuters products and services. Beginning with volume 21, number 1, year 2008, the journal is indexed and abstracted in:

- ◆ Science Citation Index Expanded (also known as SciSearch[®])
- ◆ Journal Citation Reports/Science Edition
- ◆ Biological Abstracts
- ◆ BIOSIS Previews

Mailing address: Masami Suzuki, D.V.M., Ph.D., Editor-in-Chief
Editorial Office, *Journal of Toxicologic Pathology*, c/o Publication Center, IPEC, Inc., 1-24-12 Sugamo, Toshima,
Tokyo 170-0002, Japan

Journal of Toxicologic Pathology homepage: <http://www.japantoxpath.org/en/publication/jtp/>

Free access to full papers of

Whole issue: <https://www.jstage.jst.go.jp/browse/tox/>

Vol. 22 (2009) to present: <http://www.ncbi.nlm.nih.gov/pmc/journals/1592/>

Notice for photocopying

If you wish to photocopy any work of this publication, you have to get permission from the following organization to which licensing of copyright clearance is delegated by the copyright owner.

<All users except those in USA> Japan Academic Association for Copyright Clearance, Inc. (JAACC)
6-41 Akasaka 9-chome, Minato-ku, Tokyo 107-0052, Japan
Phone 81-3-3475-5618 FAX 81-3-3475-5619 E-mail: info@jaacc.jp

<Users in USA> Copyright Clearance Center, Inc., 222 Rosewood Drive, Danvers, MA 01923, USA
Phone 1-978-750-8400 FAX 1-978-646-8600

Online ISSN 1881-915X

Cover: Representative appearances of esophageal lesions. Normal epithelium (A) in rats in the DMSO-treated group, and squamous cell atypical hyperplasia (B), papilloma (C, D), and carcinoma (E, F) in rats in the NMBA-treated group (HE staining). Atypical hyperplasia exhibits thickening of the squamous epithelium along with the presence of an abnormal cell shape, size, or nuclear morphology, and keratinization of cells within deeper layers of the mucosa is seen. Papilloma is characterized by branching central fibrovascular stalks that are covered by a variably thick and differentiated squamous epithelium that is often heavily keratinized. Cells comprising a carcinoma show features such as loss of polarity (for example, basal-like tumor cells suddenly form keratin pearls), an abundance of mitotic figures, cellular and nuclear pleomorphism, and foci of necrosis. Bars = 100 μ m (A, B, D, F) or 1,000 μ m (C, E). (See Isamu Suzuki, *et al.* p 237–246)