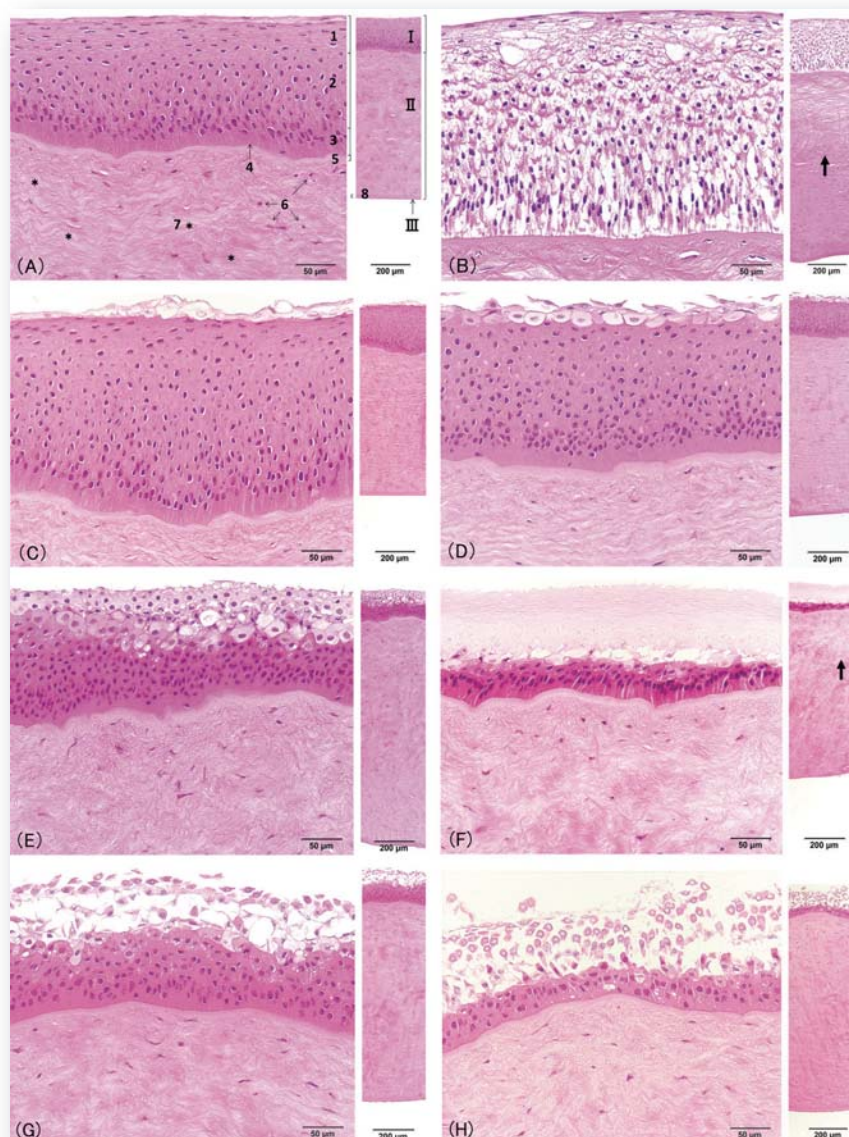




Journal of **TOXICOLOGIC PATHOLOGY**

<http://www.japantopath.org/en/publication/jtp/>



*Vol. 28
No. 4
Autumn
2015*

Published by
The Japanese Society of Toxicologic Pathology

The Journal of Toxicologic Pathology has been selected for coverage in Thomson Reuters products and services. Beginning with volume 21, number 1, year 2008, the journal is indexed and abstracted in:

- ◆ Science Citation Index Expanded (also known as SciSearch®)
- ◆ Journal Citation Reports/Science Edition
- ◆ Biological Abstracts
- ◆ BIOSIS Previews

Description

The *Journal of Toxicologic Pathology* is an official periodical journal of the Japanese Society of Toxicologic Pathology. The journal accepts original papers, short communications, case reports and review articles. One volume published each year is composed of four numbers. Members of the Society are entitled to receive all publications in exchange for his or her membership fee. All articles published in the *Journal of Toxicologic Pathology* represent the opinion(s) of the author(s) and should not be construed to reflect the opinion of the Society.

The *Journal of Toxicologic Pathology* has been selected for coverage in Thomson Reuters products and services. Beginning with volume 21, number 1, year 2008, the journal is indexed and abstracted in:

- ◆ Science Citation Index Expanded (also known as SciSearch[®])
- ◆ Journal Citation Reports/Science Edition
- ◆ Biological Abstracts
- ◆ BIOSIS Previews

Mailing address: Masami Suzuki, D.V.M., Ph.D., Editor-in-Chief
Editorial Office, *Journal of Toxicologic Pathology*, c/o Publication Center, IPEC, Inc., 1-24-12 Sugamo, Toshima,
Tokyo 170-0002, Japan

Journal of Toxicologic Pathology homepage: <http://www.japantoxpath.org/en/publication/jtp/>

Free access to full papers of

Whole issue: <https://www.jstage.jst.go.jp/browse/tox/>

Vol. 22 (2009) to present: <http://www.ncbi.nlm.nih.gov/pmc/journals/1592/>

Notice for photocopying

If you wish to photocopy any work of this publication, you have to get permission from the following organization to which licensing of copyright clearance is delegated by the copyright owner.

<All users except those in USA> Japan Academic Association for Copyright Clearance, Inc. (JAACC)
6-41 Akasaka 9-chome, Minato-ku, Tokyo 107-0052, Japan
Phone 81-3-3475-5618 FAX 81-3-3475-5619 E-mail: info@jaacc.jp

<Users in USA> Copyright Clearance Center, Inc., 222 Rosewood Drive, Danvers, MA 01923, USA
Phone 1-978-750-8400 FAX 1-978-646-8600

Online ISSN 1881-915X

Cover: Histopathology of the bovine cornea. (A) Negative control (distilled water). IVIS, 0.0; score, unremarkable. I: Corneal epithelium. II: Corneal stroma. III: Corneal endothelium. 1 Squamous cell layer, 2 Wing cell layer, 3 Basal cell layer, 4 Basal lamina, 5 Bowman's lamina, 6 Keratocytes, 7 Lamellar collagen (*), 8 Descemet's membrane. The cornea consists of five layers from the anterior to posterior, as follows: corneal epithelium, Bowman's layer, corneal stroma consisting of collagen bundles and keratocytes (fibrocytes), Descemet's membrane and corneal endothelium. The bovine corneal epithelium is composed of 15 to 17 rows with various types of stratified epithelium. From the surface layer to the basement membrane, there are approximately 4 to 5 rows of flattened "squamous" cells (superficial cells), 10 to 13 rows of wing cells and a single row of columnar basal cells in contact with the basement membrane. (B) Positive control (100% N-N-dimethylformamide). IVIS, 94.3; score, severe. (C) 100% make-up remover A, oil-type. IVIS, 0.4; slight. (D) 10% shampoo C. IVIS, 2.3; slight. (E) 10% shampoo E. IVIS, 4.6; mild. (F) 100% make-up remover C, gel-type. IVIS, 7.4; moderate. (G) 100% cleansing foam A. IVIS, 8.3; moderate. (H) 100% cleansing foam B. IVIS, 21.3; severe. (See M Furukawa1, *et al.* p 243–248)