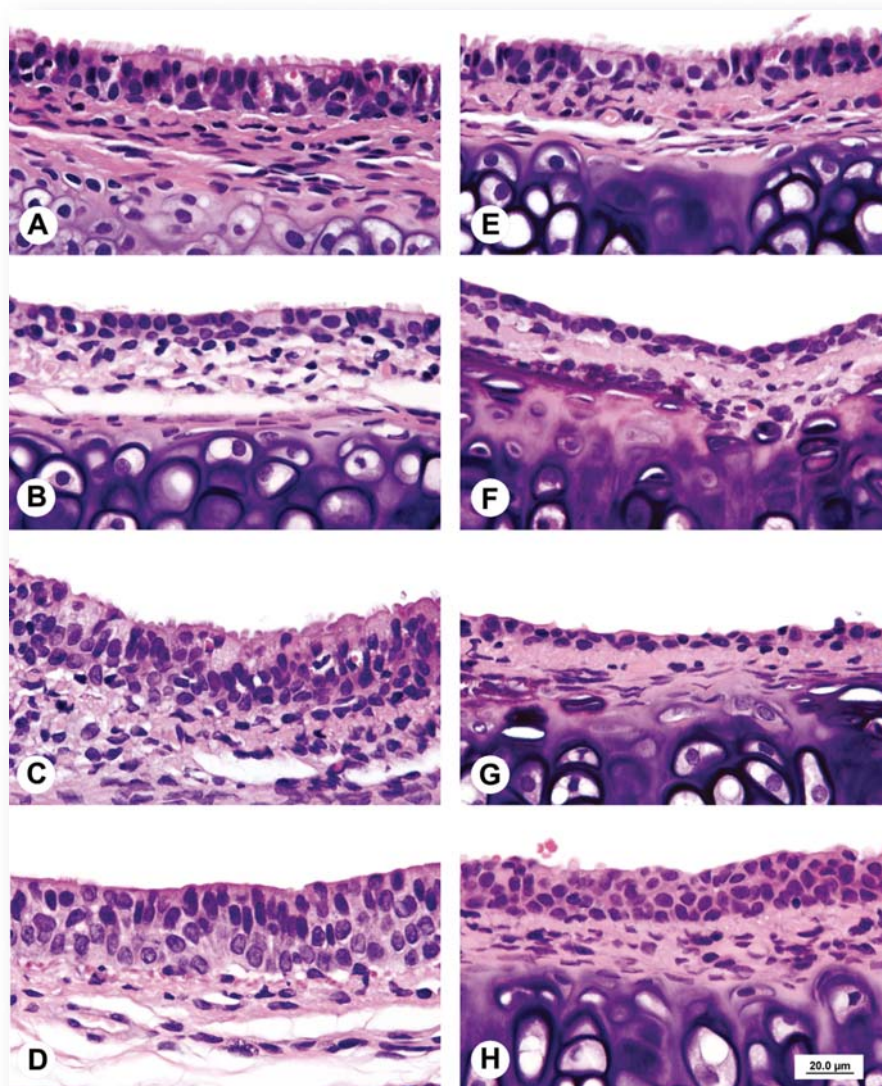




*Journal of*  
**TOXICOLOGIC  
PATHOLOGY**

<http://www.japantopath.org/en/publication/jtp/>



*Vol. 25  
No. 3  
Autumn  
2012*

**Published by**  
**The Japanese Society of Toxicologic Pathology**

*The Journal of Toxicologic Pathology* has been selected for coverage in Thomson Reuters products and services. Beginning with volume 21, number 1, year 2008, the journal is indexed and abstracted in:

- ◆ Science Citation Index Expanded (also known as SciSearch®)
- ◆ Journal Citation Reports/Science Edition
- ◆ Biological Abstracts
- ◆ BIOSIS Previews

|                                |  |
|--------------------------------|--|
| <i>Editor-in-Chief</i>         | Dai Nakae, Tokyo   |
| <i>Editor Emeritus</i>         | Eisei Ishikawa (1988–1997)                               |
| <i>Former Editors-in-Chief</i> | Kunio Doi (1998–2003)<br>Kunitoshi Mitsumori (2003–2007) |

*Editorial Board (Editors), Editors in Foreign Countries Underlined*

|  |   |                                       |
|--|---|---------------------------------------|
| <u>Wijit Banlunara, Bangkok</u>        | <u>Robert R. Maronpot, North Carolina</u> | Masami Suzuki, Shizuoka               |
| Satoshi Furukawa, Saitama              | Hirofumi Nagai, Kanagawa                  | <u>James Swenberg, North Carolina</u> |
| <u>Paul-Georg Germann, Barsbütel</u>   | Kumiko Ogawa, Tokyo                       | Kazutoshi Tamura, Shizuoka            |
| Shim-mo Hayashi, Osaka                 | Yuji Oishi, Osaka                         | <u>Leander Tryphonas, Ontario</u>     |
| Satoru Hosokawa, Ibaraki               | <u>Yoshimasa Okazaki, Itingen</u>         | Tetsuya Tsukamoto, Aichi              |
| <u>Mari Iida, Wisconsin</u>            | Kiyokazu Ozaki, Osaka                     | Masahiro Tsutsumi, Nara               |
| Katsumi Imaida, Kagawa                 | <u>Jae-Hak Park, Seoul</u>                | <u>Klaus Weber, Itingen</u>           |
| Keisuke Izumi, Tokushima               | <u>Jin Ren, Shanghai</u>                  | <u>Jihong Yang, Yunnan</u>            |
| <u>Hijiri Iwata, Itingen</u>           | Hiroshi Satoh, Tokyo                      | Midori Yoshida, Tokyo                 |
| <u>Takahito Kambara, Pennsylvania</u>  | <u>John Curtis Seely, North Carolina</u>  | Naomi Yoshimi, Okinawa                |
| <u>Jong-Koo Kang, Cheongju</u>         | Makoto Shibutani, Tokyo                   | Katsuhiko Yoshizawa, Osaka            |
| Osamu Katsuda, Nara                    | Kazumoto Shibuya, Tokyo                   |                                       |
| <u>Wolfgang Kaufmann, Ludwigshafen</u> | Mariko Shirota, Kanagawa                  |                                       |

*Description*

The *Journal of Toxicologic Pathology* is an official periodical journal of the Japanese Society of Toxicologic Pathology. The journal accepts original papers, short communications, case reports and review articles. One volume published each year is composed of four numbers. Members of the Society are entitled to receive all publications in exchange for his or her membership fee. All articles published in the *Journal of Toxicologic Pathology* represent the opinion(s) of the author(s) and should not be construed to reflect the opinion of the Society.

The *Journal of Toxicologic Pathology* has been selected for coverage in Thomson Reuters products and services. Beginning with volume 21, number 1, year 2008, the journal is indexed and abstracted in:

- ◆ Science Citation Index Expanded (also known as SciSearch®)
- ◆ Journal Citation Reports/Science Edition
- ◆ Biological Abstracts
- ◆ BIOSIS Previews

*Mailing address:* Dai Nakae, M.D., Ph.D., Editor-in-Chief  
Editorial Office, *Journal of Toxicologic Pathology*, c/o Publication Center, IPEC, Inc., 1-24-12 Sugamo, Toshima, Tokyo 170-0002, Japan

*Journal of Toxicologic Pathology* homepage: <http://www.japantopath.org/en/publication/jtp/>

Free access to full papers of

Whole issue: <https://www.jstage.jst.go.jp/browse/tox/>

Vol. 22 (2009) to present: <http://www.ncbi.nlm.nih.gov/pmc/journals/1592/>

*Notice for photocopying*

If you wish to photocopy any work of this publication, you have to get permission from the following organization to which licensing of copyright clearance is delegated by the copyright owner.

<All users except those in USA> Japan Academic Association for Copyright Clearance, Inc. (JAACC)  
6-41 Akasaka 9-chome, Minato-ku, Tokyo 107-0052, Japan  
Phone 81-3-3475-5618 FAX 81-3-3475-5619 E-mail: [info@jaacc.jp](mailto:info@jaacc.jp)

<Users in USA> Copyright Clearance Center, Inc., 222 Rosewood Drive, Danvers, MA 01923, USA  
Phone 1-978-750-8400 FAX 1-978-646-8600

Online ISSN 1881-915X

**Cover:** A. Control male. Tracheal mucosa is 2 to 3 cell layers thick with luminal lining comprised of columnar ciliated epithelial cells and Clara cells with dome-shaped apical surfaces. B. Male exposed to cigarette mainstream smoke at 75 mg total particulate matter (TPM)/m<sup>3</sup>. Attenuated tracheal mucosa lined by a single layer of cuboidal epithelial cells with shortening and loss of cilia. C. Male exposed to 200 mg TPM/m<sup>3</sup>. Thickened tracheal mucosa comprised of multiple layers of hyperplastic epithelial cells with decreased ciliated cells and cytoplasmic vacuolation of surface epithelial cells. D. Male exposed to 400 mg TPM/m<sup>3</sup>. Hyperplastic mucosal epithelial layer consisting of 3 to 4 cell layers with early organization of luminal epithelial cells. E. Control female. Tracheal mucosa is 2 to 3 cells layers thick with luminal lining comprised of tall cuboidal ciliated cells and Clara cells with dome-shaped apices. F. Female exposed to 75 mg TPM/m<sup>3</sup>. Attenuated tracheal mucosa lined by a single layer of low cuboidal and flattened epithelial cells. G. Female exposed to 200 mg TPM/m<sup>3</sup>. Markedly attenuated tracheal mucosal surface lined by a single layer of flattened epithelial cells. H. Female exposed to 400 mg TPM/m<sup>3</sup>. Hyperplastic tracheal mucosa lined by 4 layers of poorly differentiated epithelial cells. Scale bar applies to all figures (See , CA Carter *et al.* p. 201–207).