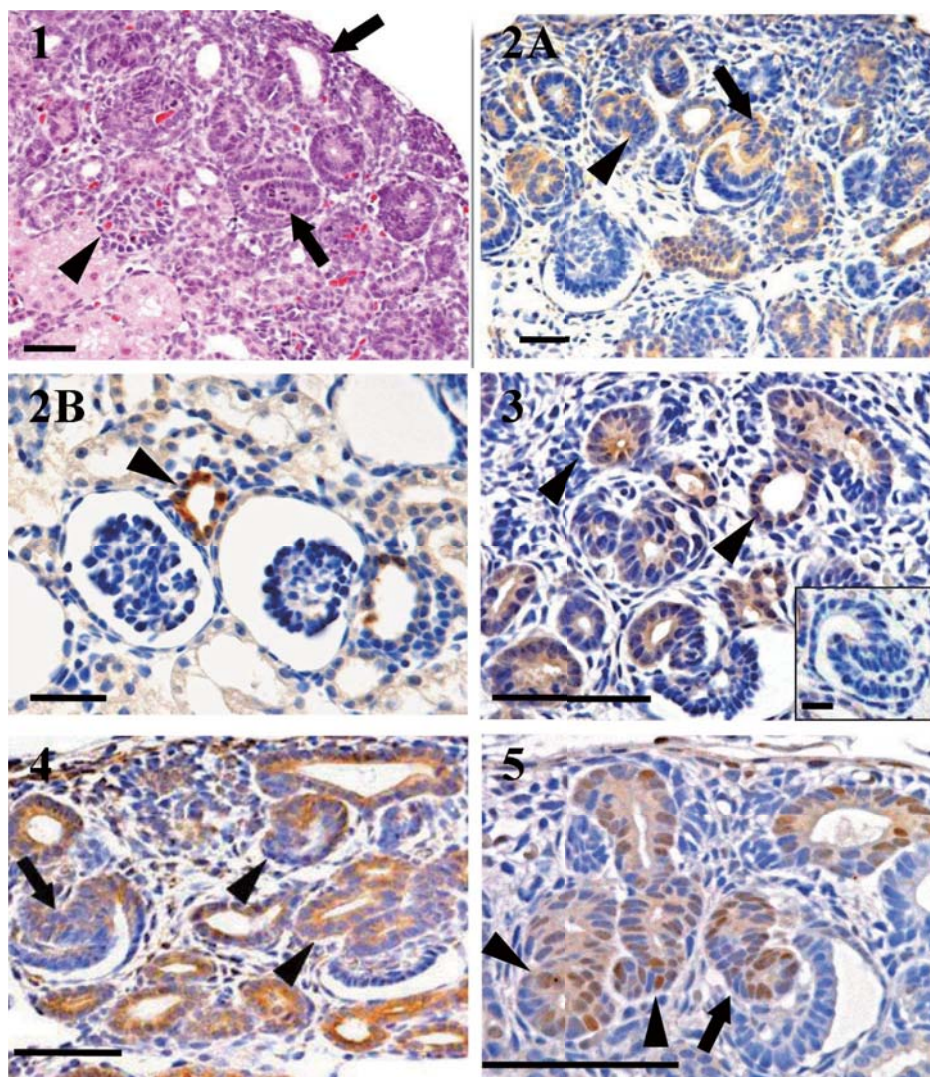




Journal of **TOXICOLOGIC PATHOLOGY**

<http://www.japantopath.org/en/publication/jtp/>



*Vol. 24
No. 4
Winter
2011*

Published by
The Japanese Society of Toxicologic Pathology

The Journal of Toxicologic Pathology has been selected for coverage in Thomson Reuters products and services. Beginning with volume 21, number 1, year 2008, the journal is indexed and abstracted in:

- ◆ Science Citation Index Expanded (also known as SciSearch®)
- ◆ Journal Citation Reports/Science Edition
- ◆ Biological Abstracts
- ◆ BIOSIS Previews

Editor-in-Chief

Dai Nakae, *Tokyo*

Editor Emeritus

Eisei Ishikawa (1988–1997)

Former Editors-in-Chief

Kunio Doi (1998–2003)

Kunitoshi Mitsumori (2003–2007)

Editorial Board (Editors)

Wijit Banlunara, <i>Bangkok</i>	Yuji Oishi, <i>Osaka</i>	Kazutoshi Tamura, <i>Shizuoka</i>
Satoshi Furukawa, <i>Saitama</i>	Kumiko Ogawa, <i>Tokyo</i>	Leander Tryphonas, <i>Ontario</i>
Paul-Georg Germann, <i>Barsbüttel</i>	Jin Ren, <i>Shanghai</i>	Tetsuya Tsukamoto, <i>Aichi</i>
Katsumi Imaida, <i>Kagawa</i>	Hiroshi Satoh, <i>Kanagawa</i>	Masahiro Tsutsumi, <i>Nara</i>
Keisuke Izumi, <i>Tokushima</i>	John Curtis Seely, <i>North Carolina</i>	Klaus Weber, <i>Itingen</i>
Hijiri Iwata, <i>Itingen</i>	Makoto Shibutani, <i>Tokyo</i>	Midori Yoshida, <i>Tokyo</i>
Jong-Koo Kang, <i>Cheongju</i>	Kazumoto Shibuya, <i>Tokyo</i>	Naomi Yoshimi, <i>Okinawa</i>
Osamu Katsuda, <i>Nara</i>	Masami Suzuki, <i>Shizuoka</i>	Katsuhiko Yoshizawa, <i>Osaka</i>
Wolfgang Kaufmann, <i>Ludwigshafen</i>	James Swenberg, <i>North Carolina</i>	

Description

The *Journal of Toxicologic Pathology* is an official periodical journal of the Japanese Society of Toxicologic Pathology. The journal accepts original papers, short communications, case reports and review articles. One volume published each year is composed of four numbers. Members of the Society are entitled to receive all publications in exchange for his or her membership fee. All articles published in the *Journal of Toxicologic Pathology* represent the opinion(s) of the author(s) and should not be construed to reflect the opinion of the Society.

The *Journal of Toxicologic Pathology* has been selected for coverage in Thomson Reuters products and services. Beginning with volume 21, number 1, year 2008, the journal is indexed and abstracted in:

- ◆ Science Citation Index Expanded (also known as SciSearch®)
- ◆ Journal Citation Reports/Science Edition
- ◆ Biological Abstracts
- ◆ BIOSIS Previews

Mailing address: Dai Nakae, M.D., Ph.D., Editor-in-Chief

Editorial Office, *Journal of Toxicologic Pathology*, c/o Publication Center, IPEC, Inc., 1-24-12 Sugamo, Toshima, Tokyo 170-0002, Japan

Journal of Toxicologic Pathology homepage: <http://www.japantopath.org/en/publication/jtp/>

Free access to full papers of

Vols.1(1988)–10(1997): http://www.journalarchive.jst.go.jp/english/jnltop_en.php?cdjournal=tox1988

Vol. 11 (1998) or later: <http://www.jstage.jst.go.jp/browse/tox/-char/en>

Notice for photocopying

If you wish to photocopy any work of this publication, you have to get permission from the following organization to which licensing of copyright clearance is delegated by the copyright owner.

<All users except those in USA> Japan Academic Association for Copyright Clearance, Inc. (JAACC)
6-41 Akasaka 9-chome, Minato-ku, Tokyo 107-0052, Japan
Phone 81-3-3475-5618 FAX 81-3-3475-5619 E-mail: info@jaacc.jp

<Users in USA> Copyright Clearance Center, Inc., 222 Rosewood Drive, Danvers, MA 01923, USA
Phone 1-978-750-8400 FAX 1-978-646-8600

Online ISSN 1881-915X

Cover: 1) Histology of nephrogenesis in a neonate on day 1. Developing renal tubules (arrows) and maturing glomeruli (arrowhead) are present. HE stain. Bar=100 μ m. 2) Immunohistochemical findings for cyclooxygenase (COX)-2 in fetuses on gestation days (GDs) 18 (A) and 21 (B). COX-2 expressions are observed in developing renal tubules (arrowhead) and S-shaped bodies (arrow, A) on GD18 and in the macula densa (arrowhead) of juxtamedullary nephrons on GD 21 (B). Immunohistochemical staining, counterstained with hematoxylin. Bar=100 μ m. 3) Immunohistochemical findings for microsomal PGE2 synthetase (mPGES)-1 in a neonate on day 1. Expressions of mPGES-1 are observed in the developing tubules (arrowheads), but not in S-shaped bodies (inset: Bar=20 μ m). Immunohistochemical staining, counterstained with hematoxylin. Bar=100 μ m. 4) Immunohistochemical findings for PGE2 receptor (EP) 4 in a fetus on GD 18. EP4 expressions are observed in the developing renal tubules (arrowheads) and S-shaped bodies (arrow), as well as occasional interstitial mesenchymal cells. Immunohistochemical staining, counterstained with hematoxylin. Bar=100 μ m. 5) Immunohistochemical findings for cyclin D1 in a neonate on day 1. Cyclin D1 expressions are observed in both the nucleus and cytoplasm of the developing renal tubule (arrowheads) and S-shaped bodies (arrow), as well as mesenchymal cells. Immunohistochemical staining, counterstained with hematoxylin. Bar=100 μ m. (See Yamamoto E, *et al.*, p. 257–261)