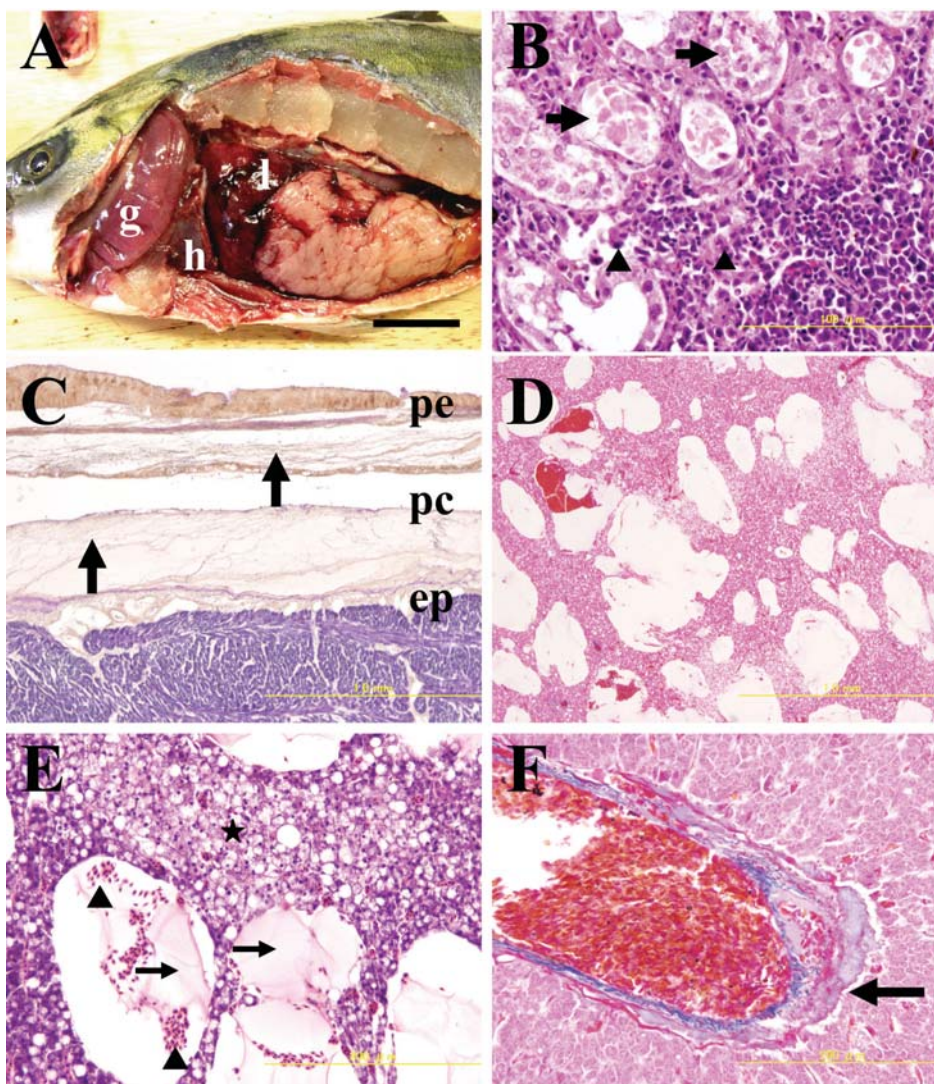




# *Journal of* **TOXICOLOGIC PATHOLOGY**

<http://wwwsoc.nii.ac.jp/jstp3/english/Journal.html>



*Vol. 23  
No. 3  
Autumn  
2010*

**Published by**  
**The Japanese Society of Toxicologic Pathology**

*The Journal of Toxicologic Pathology* has been selected for coverage in Thomson Reuters products and services. Beginning with volume 21, number 1, year 2008, the journal is indexed and abstracted in:

- ◆ Science Citation Index Expanded (also known as SciSearch®)
- ◆ Journal Citation Reports/Science Edition
- ◆ Biological Abstracts
- ◆ BIOSIS Previews

*Editor-in-Chief*

Dai Nakae, *Tokyo*

*Editor Emeritus*

Eisei Ishikawa (1988–1997)

*Former Editors-in-Chief*

Kunio Doi (1998–2003)

Kunitoshi Mitsumori (2003–2007)

*Editorial Board (Editors)*

Wijit Banlunara, *Bangkok*

Satoshi Furukawa, *Saitama*

Paul-Georg Germann, *Barsbüttel*

Katsumi Imaida, *Kagawa*

Keisuke Izumi, *Tokushima*

Hijiri Iwata, *Itingen*

Jong-Koo Kang, *Cheongju*

Osamu Katsuda, *Nara*

Wolfgang Kaufmann, *Ludwigshafen*

Yuji Oishi, *Osaka*

Kumiko Ogawa, *Tokyo*

Jin Ren, *Shanghai*

Hiroshi Satoh, *Tokyo*

John Curtis Seely, *North Carolina*

Makoto Shibutani, *Tokyo*

Kazumoto Shibuya, *Tokyo*

Masami Suzuki, *Shizuoka*

James Swenberg, *North Carolina*

Kazutoshi Tamura, *Shizuoka*

Leander Tryphonas, *Ontario*

Tetsuya Tsukamoto, *Aichi*

Masahiro Tsutsumi, *Nara*

Klaus Weber, *Itingen*

Midori Yoshida, *Tokyo*

Naomi Yoshimi, *Okinawa*

Katsuhiko Yoshizawa, *Osaka*

*Description*

The *Journal of Toxicologic Pathology* is an official periodical journal of the Japanese Society of Toxicologic Pathology. The journal accepts original papers, short communications, case reports and review articles. One volume published each year is composed of four numbers. Members of the Society are entitled to receive all publications in exchange for his or her membership fee. All articles published in the *Journal of Toxicologic Pathology* represent the opinion(s) of the author(s) and should not be construed to reflect the opinion of the Society.

The *Journal of Toxicologic Pathology* has been selected for coverage in Thomson Reuters products and services. Beginning with volume 21, number 1, year 2008, the journal is indexed and abstracted in:

- ◆ Science Citation Index Expanded (also known as SciSearch®)
- ◆ Journal Citation Reports/Science Edition
- ◆ Biological Abstracts
- ◆ BIOSIS Previews

*Mailing address:* Dai Nakae, M.D., Ph.D., Editor-in-Chief

Editorial Office, *Journal of Toxicologic Pathology*, c/o Publication Center, IPEC, Inc., 1-24-12 Sugamo, Toshima, Tokyo 170-0002, Japan

*Journal of Toxicologic Pathology* homepage: <http://wwwsoc.nii.ac.jp/jstp3/english/Journal.html>

Free access to full papers of

Vols.1(1988)–10(1997): [http://www.journalarchive.jst.go.jp/japanese/jnltop\\_ja.php?cdjournal=tox1988](http://www.journalarchive.jst.go.jp/japanese/jnltop_ja.php?cdjournal=tox1988)

Vol. 11 (1998) or later: <http://www.jstage.jst.go.jp/browse/tox/-char/en>

*Notice for photocopying*

If you wish to photocopy any work of this publication, you have to get permission from the following organization to which licensing of copyright clearance is delegated by the copyright owner.

<All users except those in USA> Japan Academic Association for Copyright Clearance, Inc. (JAACC)  
6-41 Akasaka 9-chome, Minato-ku, Tokyo 107-0052, Japan  
Phone 81-3-3475-5618 FAX 81-3-3475-5619 E-mail: [info@jaacc.jp](mailto:info@jaacc.jp)

<Users in USA> Copyright Clearance Center, Inc., 222 Rosewood Drive, Danvers, MA 01923, USA  
Phone 1-978-750-8400 FAX 1-978-646-8600

Online ISSN 1881-915X

**Cover:** A: Cultured Japanese amberjack *Seriola quinqueradiata* suffering from ascites occurring in the winter, with pale coloration of the gills, a heart with a white membrane and a congested liver. The scale bar indicates 3 cm. g: gill. h: heart. l: liver. B: Histopathological features of the kidney. Renal tubular epithelia are necrotized (↑). Some swollen reticular cells (▲) are observed in the hematopoietic tissue. H&E. C: Histopathological features of the heart. Severe fibrin deposition (↑) occurs in the epicardium and the pericardial cavity (pc). PTAH. ep: epicardium. pe: pericardium. D: Histopathological features of the liver. The hepatic parenchyma displays many vacuolated spaces. Azan. E: Histopathological features of the liver. Dilated sinusoids contained many erythrocytes (▲) and eosinophilic materials (↑). Necrotic lesions (★) were also observed around the dilated sinusoids. H&E. F: The hepatic vein shows congestion, while edema and fibrin deposition (↑) occur in the perivascular tissue. Azan. (See Kobayashi T, p.165–169)